



Bentley Wood

High School for Girls

# BTEC Level 3 Health and Social Care

Bridging Work

Year 11 into 12 for 2024/25



Name: \_\_\_\_\_

Tutor Group: \_\_\_\_\_

Teacher: \_\_\_\_\_

# BTEC Level 3 Health and Social Care Bridging Work



Name:

Home School:

## Reminder

- ✓ Bridging work is **COMPULSORY!**
- ✓ It should be handwritten or **PRINTED** Word/PowerPoint.
- ✓ It is due on your **FIRST DAY** at Bentley Wood in September.
- ✓ You will be **TESTED** on the content on the same day.
- ✓ If you fail to complete the work, fail the work, or fail the test, you will **not be continuing on the course.**



# Health and Social Care

## Welcome to your new BTEC course.

### **BTEC courses:**

BTEC qualifications are designed to provide specialist, work-related qualifications in a range of vocational sectors. They give learners the knowledge, understanding and skills that they need to prepare for employment.

BTEC qualifications help to prepare you for both the world of work and further education and help you to develop many skills; organisation, time management, presentation and research skills and writing in different formats. All of these are highly valued by employers and further education institutes.

If you are planning to go on to further education you will have developed all the above skills **plus** essential independent study skills - highly valued by colleges and universities.

### **BTEC courses are different from GCSE courses:**

- 60% of the qualification is in the form of **coursework** assignments. Evidence for each coursework unit will be in the form of a written report
- Every assignment you complete, counts towards your final grade.
- Each year you will complete two externally assessed units - **exams**.
- Vocational courses encourage you to take a more active part in your learning. So, you will need to take responsibility for your learning by planning your work, carrying out research, and regularly reviewing your progress.

### **Expectations**

- Bring folder and all notes to every lesson
- All coursework is backed up and available via Microsoft Teams
- Bring all equipment, such as pens, highlighters.
- 100% attendance and punctuality
- Your lessons are merely a support to guide you through Health and Social Care BTEC, the hard work has to come outside of class too, to ensure your success.

In health and social care there are many different units that you will study.

The tasks you will complete in this booklet will help you begin each of the units at Bentley Wood High School.

**Unit 2: Working in health and social care**

**Task 1:** Choose a role in health and social care that you are interested in. This does not necessarily need to be the career you want to go into, just one that you would like to learn more about. Create an A3 or A4 information sheet about this profession. *Ensure your presentation is excellent.*

**Do not choose educational roles - they are not health or social care careers.**

Success Criteria:

Have I included..	Complete?
Role of this person	
Qualifications they need for their role	
Responsibilities this person has in their role	
Skills/qualities to be successful in this role	

**Practice exam questions:** In the exam for this unit you will be given a scenario and you then must answer questions linked to this scenario. For this task you need to conduct research to answer the questions.

**Task 2:** Read the scenario and complete the exam questions

<p><b>Scenario- Caring for the elderly with complex needs</b></p> <p>Kevin is 73 years old and is terminally ill with throat cancer; he has a tracheotomy. He is the main carer for his wife Sue, who has Parkinson’s disease and is due to undergo investigations. They cope well together and have only just required additional support.</p> <p>Kevin wants to remain in his own home and both of them are keen for Sue to be involved in his personal care. Sue wishes to remain in their marital home after Kevin has died. Their GP has referred them to Age UK who are due to visit them at home.</p> <p>Their neighbours have raised their concerns with social services after Sue forgot how to use her front door key.</p>
--

1) Identify **two other voluntary organisations** that could support Kevin and Sue. (2 marks)

(i) .....

(ii) .....





## Unit 7: Principles of safe practice in health and social care

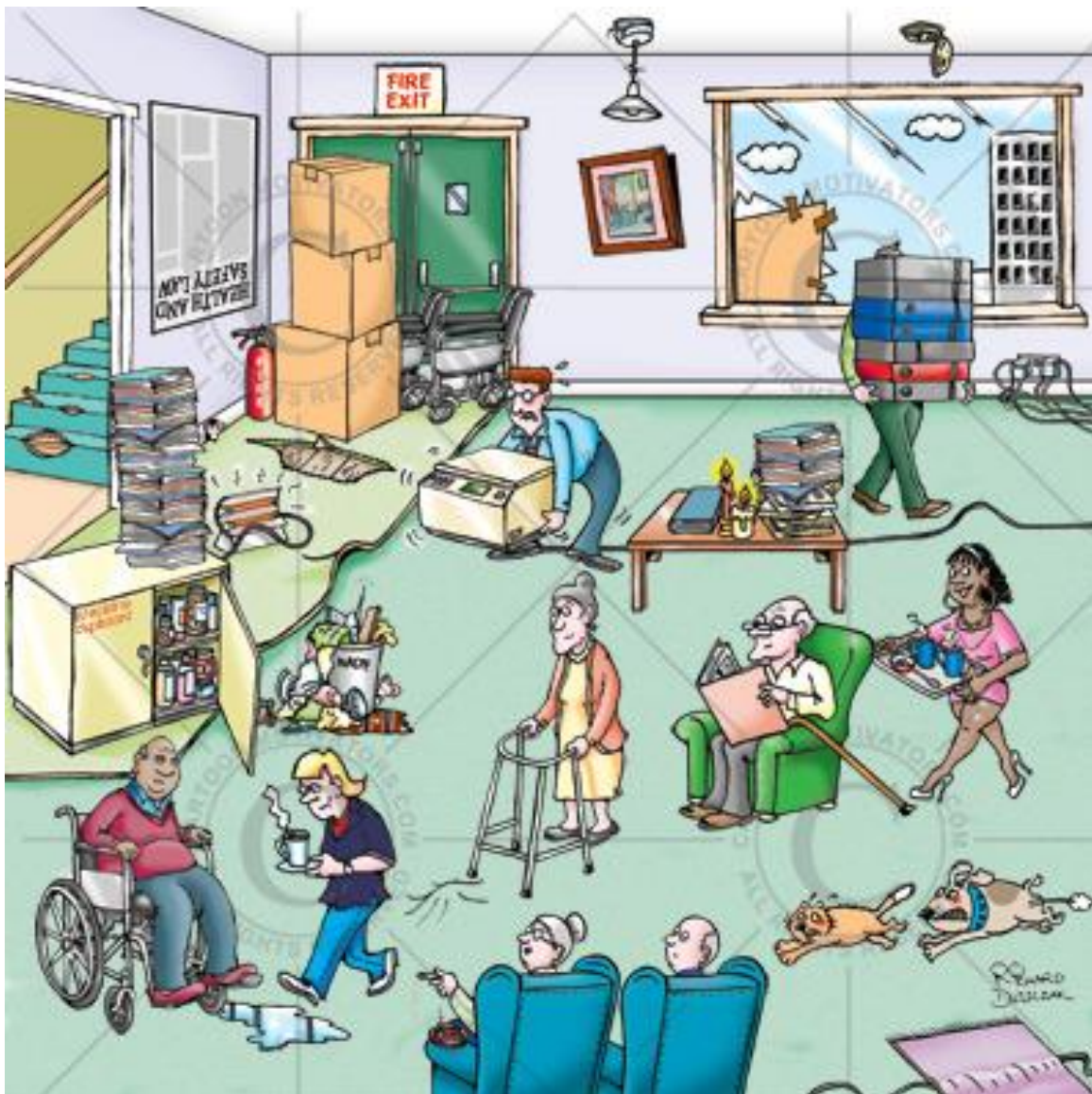
To keep people safe at work there are laws which have been introduced to keep service providers (employees) and service users (people being cared for) safe from harm. Your task is to research the role of *Health and Safety Executive* and find 5 different legislations (laws) which have been introduced.

Look for legislation on the following themes:

- General health and safety and risk assessment
- Harmful substances
- Accidents and first aid
- Moving heavy loads and moving people
- Preventing infections e.g. Covid-19

<https://www.hse.gov.uk/>

**Task 1:** Can you spot the hazards? Circle all the hazards you can find.



**Task 2:** You have just started working as the health and safety co-ordinator at this care home. Thinking about the laws you have found through your research, you need to create a training presentation (in the form of a PPT presentation) to the staff at the care home to help them to improve safety. You must explain what the laws are, and explain how these laws will increase their safety an that of the elderly residents in their care.

Success Criteria:

Have I included..	Complete?
5 health and safety legislations (law)	
Linked the legislation to how to keep safe in a care home e.g. “Manual handling law is important as it guides people to know how to lift residents in a safe way”	
Explained how each law keeps people safe in the workplace.	

**Unit 10: Sociological Perspectives**

**Task:** Produce a report (approximately 1000 words) on the different health inequalities in your local area. Your report should include how health differs between different groups of people, who has the 'best' health and who has the 'worst' health? You can also compare health in your local area, compared to England as a whole. You must include statistics to demonstrate your points.

Choose a theme to focus on. Examples:

- Cardiovascular diseases
- Sickness and death from Covid-19
- Obesity
- Diabetes
- Alcohol related harm

You may want to look at the some or all of the following social groups: (Minimum of 3)

- Age
- Ethnicity
- Gender
- Class
- Disability

**Resources to help you**

<https://www.harrow.gov.uk/downloads/file/24322/health>

<https://www.harrow.gov.uk/downloads/file/26906/public-health-england-cardiovascular-diseases-report>

<https://fingertips.phe.org.uk/profile/health-profiles/data>

<https://fingertips.phe.org.uk/static-reports/health-profiles/2019/E09000015.html?area-name=Harrow>

<https://www.england.nhs.uk/wp-content/uploads/2018/12/ehircp-l-harrow-ccg-dec18.pdf>



Success Criteria:

Have I included...	Complete?
A report which reaches 1000 words	
A minimum of three social groups	
Statistics (numbers, graphs, tables)	
A conclusion about who has the 'best' or 'worst' health	
Correct spelling and punctuation throughout	

<b>FINAL CHECK</b>	
Task	Complete?
Unit 2 Task 1 - information sheet	
Unit 2 Task 2 - exam questions	
Unit 7 Task 1 - spot the hazard	
Unit 7 Task 2 - health and safety PowerPoint	
Unit 10 Task 1 - health inequalities report	